

■ EOL-TE-LED (ETEL)

■ LED Elevated Taxiway Edge Light

Compliance with Standards

CAAC:AC-137-CA-2015-01 & 03
 SAC: GB/T 7256
 ICAO: Annex 14, Volume I
 IEC: TS 61827
 FAA: AC 150/5345-46 & EB NO.67
 NATO: STANAG 3316

Application/Use

Taxiway edge light

Features

- LED is featured by long life, effective energy saving, maintenance-free, which brings enormous economic benefits to customer
- Patent inverted-cone prism with high light utilization ratio
- Precise beam angle range from zero to six degrees, which won't dazzle the pilots at close range
- Consistent dimming curve with halogen lamp fixture, complying with FAA standards
- Strict LED color management to ensure premium color consistency
- Prism made of glass material, of which the surface is resistant to the sand erosion
- Distinctive inverted-cone edge of prism, which effectively prevent accumulation of rain and snow, wind and sand
- Proprietary driving circuit and thermal management solution, which greatly improves the reliability and service life of light fixture
- Power factor above 0.9, which minimizes the power network interference
- Optional function of single lamp failure detection, which enables the light to be open as halogen lamp once LED fails
- Tool free maintenance, easy disassembly, single hand lamp replacement possibility
- The main body is made of aluminum alloy with anti-corrosion surface treatment, all fasteners are made of stainless steel, suitable for various harsh environment applications
- High-precision parts and components machining to ensure all dimensional quality and accuracy
- Forged frangible pole with precise machining, complying with FAA standards, ensuring good stability and reliability
- IP66-grade ingress protection of the fixture, keep interior from dust
- Level gauge can be placed directly on the top of prism to adjust the horizontal angle of lighting fixture



Ordering Information

EOL-TE-LED-XXX-B-X

Type ————
 EOL-TE=Elevated taxiway edge light

Light Source ————
 LED=LED lamp

Power Supply ————
 220 = 220VAC
 024 = 24VAC
 012 = 12VAC
 066 = 6.6A

Beam Color ————
 B=Blue

Optional Function ————
 M=single lamp fault detection function

* Please provide detailed installation info while ordering, spare parts and accessories should be separately ordered with specific order no.

Installation

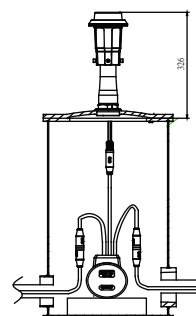


Fig 1. On 12" deep base.

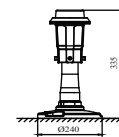


Fig 2. Flange direct mount

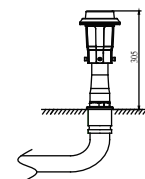
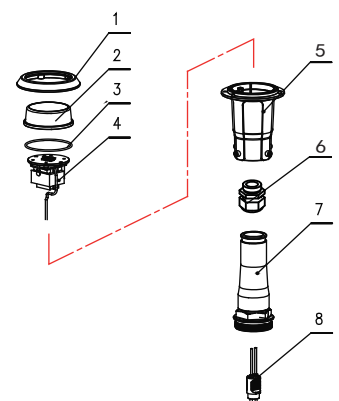


Fig 3. Stake mount

* Please find detailed information in installation manual

Structure

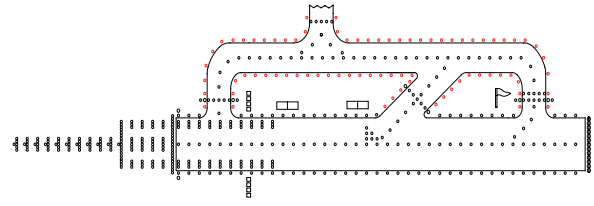
1. Upper cover
2. Prism
3. Light body gasket
4. Photoelectric assy
5. Light body
6. Waterproof gland
7. Frangible pole
8. plug



Airsafe

■ EOL-TE-LED (ETEL)

■ LED Elevated Taxiway Edge Light



Specifications

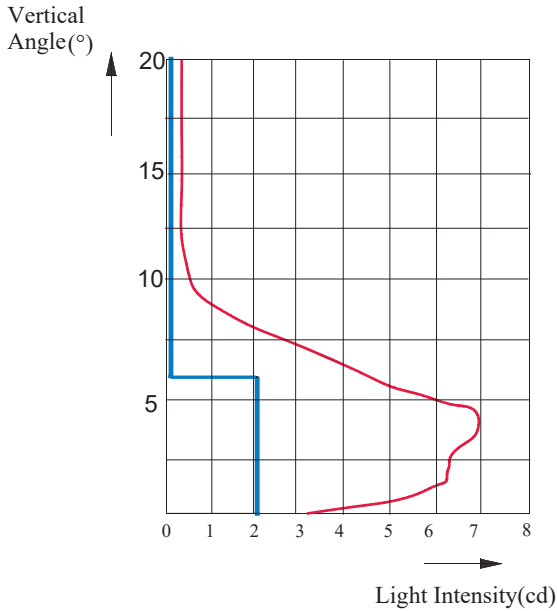
Light source: one Blue LED particle

Power : 4 VA

Power Factor: ≥ 0.9

IP Grade: IP 66

Photometric Data



EOL-OB-LED (Red) ICAO Table 6.3 Type B, FAA L-810

Spare Parts

Struc No.	Part Name	Order No.	Description
2	Prism	931116	Inverted-cone prism III
3	Body seal gasket	41114	O-ring 71*2.65
7	Frangible Pole	24211	Frangible coupling
8	Style 6 Plug	HT70603	Secondary Cable Connector-A6 Double core plug(Flat Type)-High Temperature resistance

Accessories

	Description	Order No.
1	Flange (10 inches)	FL-10
2	Flange (12 inches) G2 Screw	FL-12-X-G2
3	Six angle wrench	54101
4	Isolation Transformer (15 W)	ITF-015-066
5	Secondary Calbe connector style 7	REC 7
6	Corrector	954211
7	Isolation Transformer Box	TJB-12

Application		Main Beam		Color	Required min. cd	Actual min. cd
		H	V			
EOL-TE-LED	ICAO 5.3.17.8	360°	0°-6°	Blue	2	2.3
			6°-75°		0.2	0.2
	FAA L-861T	360°	1°-6°		2	2.5

Packing Data

4 elevated lights

Size: 300×255×380 mm³

Unit net weight: 1.28 kg

Gross weight: 5.5 kg

* All rights reserved, subject to modifications

Tel: 021 63063356 Fax: 021 63643114 Email: sales@airsafe.com.cn