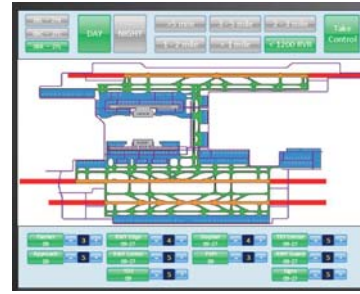


# Airsafe

## I-ALCMS

## Intelligent Airport Lighting Control and Monitoring System



### Compliance with Standards

- ICAO: Annex 14, Vol I
- ICAO: DOC 9157 Part 4 and Part 5
- ICAO: DOC 9476
- ICAO: DOC 9830
- FAA: AC 150/5345-56
- FAA: AC 120-57

### Application/Use

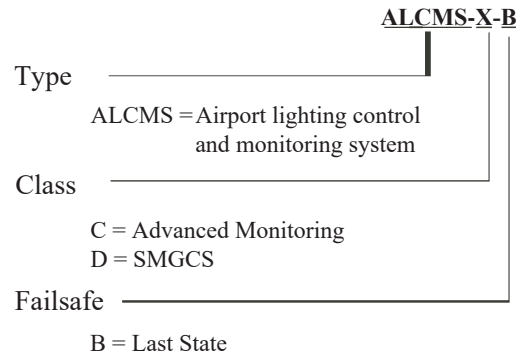
Airsafe's Intelligent Airport Lighting Control and Monitoring System(I-ALCMS), that enables control and monitoring of Constant Current Regulators(CCRs), Generators and general elements. The I-ALCMS has advanced features for individual light control and monitoring.

Meanwhile, the I-ALCMS can integrate with other airport systems such as Runway Status Lights(RWSL), Advanced Surface Movement Guidance and Control Systems(A-SMGCS).

### Features

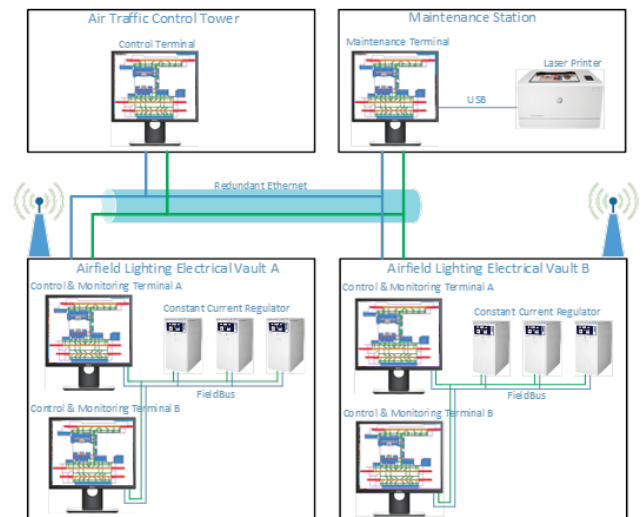
- PC architecture, distributed, modular system design; Redundant hot backup system design;
- User-friendly HMI design, which can increase interface functions according to customer needs;
- Fiber Optic, hard wire, wireless or telephone modems optional primary communication networks for a variety of field conditions;
- Meet the corresponding control and monitoring function requirements of FAA and ICAO;
- Meet the control and monitoring function requirements of CAAC active and backup CCR switching;
- Seamless integration of light fault monitoring and stop bar control and monitoring system functions;
- Provide an open and authorized interface to access a variety of airport operation management information;
- Highly scalable to meet airport expansion and adjustment requirements;
- By default, the last state failure mode is maintained, and the target circuit and the object can be preset and controlled according to the operation requirements;
- Upgradeable and extended taxi guidance for access to advanced ground movement guidance and control system;
- The runway status light control and monitoring function can be upgraded and extended to access the runway status light system.

### Classification



\* Please contact manufacturer with the site condition and system requirement in order to confirm the system configuration and quotation

### System Overview



I-ALCMS

1  
2

Please find detailed information in installation manual

## ■ I-ALCMS

## ■ Intelligent Airport Lighting Control and Monitoring System

### Technical Data

- The time taken to enter or reject the command from the tower touch screen to the system <0.5s
- The time taken from the input of the command to the output of the control signal to the controlled device is <1.0s
- The time taken that system displays that the control device receives the control signal t <2.0s
- The time elapsed from the receipt of the response from the controlled device to the display of the information on the tower touch screen is <1.0s
- The time taken to the status change of the stop bar lights in the display of the tower touch screen <2.0 seconds;
- The time taken to the status change of other lights in the display of the tower touch screen <5.0 s;
- The time it takes for the system to automatically detect the faulty component and communication link is <10s;
- The time it takes to switch to a redundant component during a system failure (no command execution during this period) is <0.5 s;